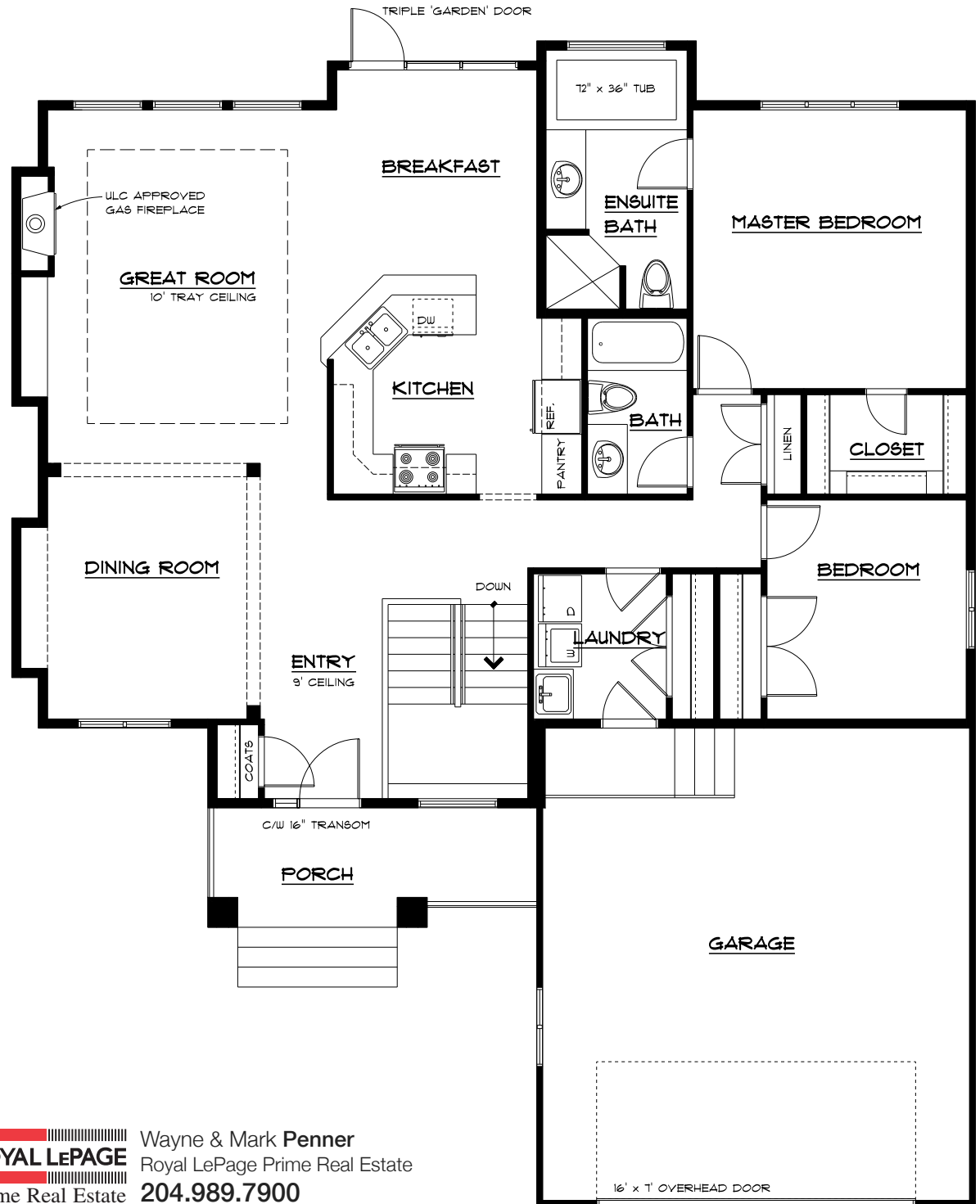




The Stratford

Base Price \$357,965 +GST
1620 Square Feet

The Stratford truly embodies balance and symmetry which fosters relaxation and convivial entertaining. For easy circulation, the entry and front facing Dining room divide the front of the house from the back and the more formal spaces from the kitchen, Great Room and garage. To enhance the openness, the architect designed a natural lit staircase to the right of the entry hall. Ending the day in the private master suite secluded at the rear of this home is a soothing prospect. The front elevation conveys strength and permanence and is designed to make a statement. As you climb the stairs the arched covered entrance embodies Old world elegance and charm and is aesthetically pleasing. The Stratford is a true masterpiece from every angle and has a very impressive presence.



ROYAL LEPAGE
Prime Real Estate
INDEPENDENTLY OWNED AND OPERATED

Wayne & Mark Penner
Royal LePage Prime Real Estate
204.989.7900

©2013 Royal LePage Inc. All rights reserved.